

PERRY NOTES

STARTING AT THE END

Wise & Foolish People
Matthew 7:24-29

I. THE CONTEXT FOR THE SERMON ON THE MOUNT

- A. Beginning at the end—
- B. The setting for the sermon—
- C. The essential questions Jesus asks—
 - What kind of king is Jesus?
 - What kind of kingdom is He bringing?
 - Will you align your allegiance to Jesus?

II. THE MESSAGE OF THE SERMON ON THE MOUNT

- A. Choose Hard—
- B. Story of the Wise & Foolish People

III. THE RESPONSE TO THE SERMON ON THE MOUNT

FAMILY TALKING POINTS

Helping parents continue the conversation at home

- ⇒ As a life principle—how can it be helpful to begin with the end in mind?
- ⇒ The overall message of the Sermon on the Mount is for Jesus followers to CHOOSE HARD. How is that message true of Christianity?

CONTACT PCC STAFF

ROD GEIGER — *lead pastor* / rgeiger@perrychristian.org
DOUG MODLIN — *family pastor* / dmodlin@perrychristian.org
JAY SECREST — *music director* / jsecrest@perrychristian.org
SARAH MODLIN — *preschool director* / smodlin@perrychristian.org
KAREN HINZMAN — *business manager* / khinzman@perrychristian.org
BECCA ZAPOTOCZNY — *office manager* / rzapotoczny@perrychristian.org

PCC ELDERSHIP TEAM

BOB SNYDER (CHAIRMAN), STEVE BRUNKER, BILL HUGHES,
JEFF CALE, JERRY MCCOY, BILL TICHON, TIM KERNAN



WORSHIP 9:00 & 10:30 AM

We offer two worship services that are more alike than different. The only difference some weeks may be that the song selection during the 9:00 service is more traditional, while the song selection for the 10:30 service is more contemporary. But regardless of the different styles we may sing—we are striving to be ONE CHURCH in the worship of our ONE GOD.



JOIN A LIFEGROUP

A variety of **CAMPUS LIFEGROUPS** are beginning now and this is a perfect time to join the group that best fits your needs.

SUNDAY GROUPS

9:00 — 10:00 Life Groups

- **The Mix Group** in Study (*Jerry McCoy*)

10:30 — 11:30 Life Groups

- **Friendship Group** in Chapel (*Larry Burgett*)
- **Encouragers Group** In Gym (*Bill Hughes*)

Children's Programs available during the 10:30 Worship

OTHER GROUPS

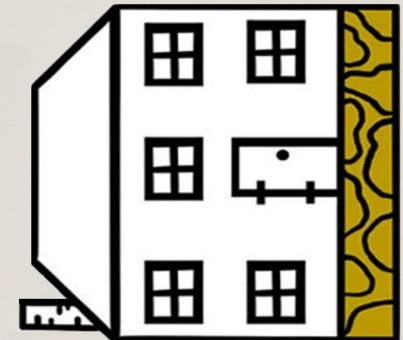
- **Men's Study Group** — *Saturday 8 AM* in Chapel
- **Women's Study Group** — *Wednesday 6:30 PM* in Chapel

HOME GROUPS

During the week there are several other Life Groups that are meeting in either homes or at the church. If you are interested in finding out more about these groups, please mark your registration book or call the church office and we will have someone contact you and help you find a group.

January 19, 2025

THE GOOD LIFE
according to Jesus
THE SERMON ON THE MOUNT



COMMUNION SERVICE

Communion is offered to anyone who is a Christian. Please take a disposable communion cup as you enter the worship center and partake as prompted in the service. (Please dispose of your cups in the trash receptacles as you leave.)

TITHES & OFFERINGS

An opportunity is provided for the giving of a tithe/ offering as an act of worship for those who have committed their lives to Christ. Our gifts of love are used to support PCC and the many missions we support. Offering boxes are located at the worship entrance. If you are our guest, please do not feel an obligation to give.



Attendance Combined services (Livestream views)	311 (85)	Giving Total	\$9,062
---	-------------	-----------------	---------

WHATEVER A NIGHT FOR EVERYBODY

Looking for something to do on Friday night, February 14, well, **WHATEVER NIGHT** is for YOU! Whether you are looking for a Valentines date or just a fun time with friends—this night is whatever you want it to be (and we will include fresh popcorn, cookies, games, and the movie THE UNSUNG HERO. Bring a friend, invite a friend, meet a friend—just don't stay home alone.

LOOKING FOR ROUND LAKE CAMP VOLUNTEERS

Doug has a great team of camp volunteers, but he is always looking for new faces to join their fun. Sunday, February 9th Doug would like to meet with anyone interested working with 5th & 6th grade students for the week of July 27th—August 1st. The meeting will be after 2nd service in the Worship Center.

R.O.C.K VALENTINES

Monetary and snack donations are needed for the College Kids' Valentine's Day Care Packages. They love anything. Tammy will use the medium flat rate boxes this year and those cost around \$16.00 each. She will ship 9 boxes. Please have your donations turned in by Sunday, February 2. Checks can be made payable to the church with R.O.C.K. In the memo line. Donations can be dropped off in the church office or by contacting Tammy Hughes at 330.705.5917.



THE PREGNANCY & PARENTING CENTER

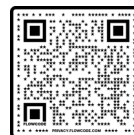
In January, 2022, The Pregnancy & Parenting Center, formerly Pregnancy Choices, adopted a new name to more accurately describe the services taking place at our 22nd Street location. Here, moms *and* dads receive support, supplies and parenting education. TPAPC is a proud member of the Pregnancy Support Network consisting of The Pregnancy & Parenting Center, Akron Pregnancy Services, Eva Women's Clinic—Canton *and* Akron, and Hope and Healing. It is indeed exciting to witness how far we've come from the Crisis Pregnancy Support Center in 1985 to the Pregnancy Support Center, Pregnancy Choices and now The Pregnancy and Parenting Center—the place for families to receive the support and resources necessary to make life affirming decisions and build stronger families.

ANNUAL CHILI COOK OFF

Our ANNUAL CHILI COOK OFF will be Sunday, February 2, after second service. Please sign up at the Registration Desk in the church Foyer if you can bring a crockpot of your favorite chili. We will recognize the top TWO chili entries. We need at least 30 pots to feed this hungry church.

WINTER JAM 2025

Attention 6th-12th Grade---SKILLET, COLTON DIXON, ANNE WILSON--Friday, January 31st. Cost is \$15 (cash at the door) to register scan the QR code and complete the form. Be at the church at 3:30pm. Food vendors will be open so bring a few more bucks for snacks & drinks. Sign up deadline is January 29th.



FINANCIAL PEACE UNIVERSITY

If you've ever felt like you just can't get in control of your money, you're not alone. You'd be surprised how many people you know are struggling just like you. But it's time for your struggle to end—starting today. Join our Financial Peace University class at 139 Perry Dr NW starting on Sunday January 26 from 3 pm—5 pm. Sign up at the registration table. For questions see any of this years instructors, Karen Hinzman, Bill Tichon, Kevin Princehorn or Larry Burgett.

BLESSING BALLOONS

Perry Christian & Lift Up Balloons and Design along with the community will be providing **Blessing Balloons** to 1200 seniors in Nursing Homes and Assisted Livings in Stark County. The Purpose of this project is to bring joy, love, and blessings to the seniors in our community this Valentine's Day. Along with the balloons the seniors will receive a hand colored card that shares, John 3:16. Each balloon and card delivered will offer a reminder of God's enduring love.

WAYS TO HELP:

- We will have a service day, Saturday, February 8th to assemble balloons, from 8:30 am to 1 pm.
- We also need volunteers to help deliver balloons the week of Valentines Day.
- Also there is a community coloring event at R & R Coffee, Thursday January 23 from 6 pm—8 pm.

We are so excited for this unique opportunity to serve and share Gods Love with others. Be sure to sign up at the registration table and see Jay Secrest or Sarah Cole for questions.

2025 SECRET SISTER REGISTRATION

The goal of the Secret Sisters is to glorify the Lord by lifting up your sister in Christ. It's not about material things, but a way to show love towards her with a prayer, a card or sometimes just a letter to let her know she is being thought of. We are to lift our sister in Christ up spiritually and mentally. If interested fill out the form in the Foyer and place it in the box or hand it to one of the SOS team **by January 31**. Your Secret Sister will be emailed to you by mid February.